

OPTICON

Barcode Scanner

Ethernet (Image) Driver

Supported version

TOP Design Studio

V1.4.11.0 or higher



CONTENTS

We want to thank our customers who use the Touch Operation Panel.

- 1. System configuration** [Page 2](#)
Describes connectable devices and network configurations.
- 2. External device selection** [Page 3](#)
Select a TOP model and an external device.
- 3. TOP communication setting** [Page 4](#)
Describes how to set the TOP communication.
- 4. External device setting** [Page 12](#)
Describes how to set up communication for external devices.

1. System configuration

The system configuration of TOP and "OPTICON – Barcode Scanner" is as follows:

| Series | Link I/F | Communication method | System setting | Cable |
|-------------------|---------------|----------------------|--|-----------------------------|
| NLV-□□□□ *Note 1) | Ethernet Port | TCP | 3. TOP communication setting 4. External device setting | Twisted pair cable *Note 2) |

*Note 1) Confirm whether the model has Image capture/Transfer mode.

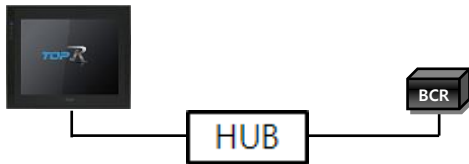
*Note 2) Twisted pair cable

- Refer to STP (Shielded Twisted Pair Cable) or UTP (Unshielded Twisted Pair Cable) Category 3, 4, 5.

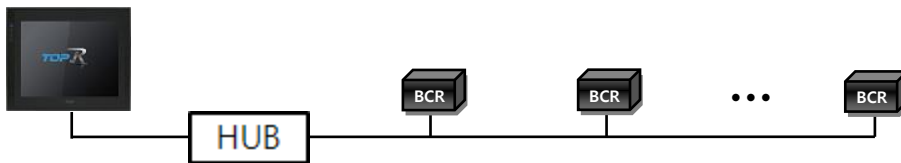
- Depending on the network configuration, you can connect to components such as the hub and transceiver, and in this case, use a direct cable.

■ Connectable configuration

- 1:1 connection

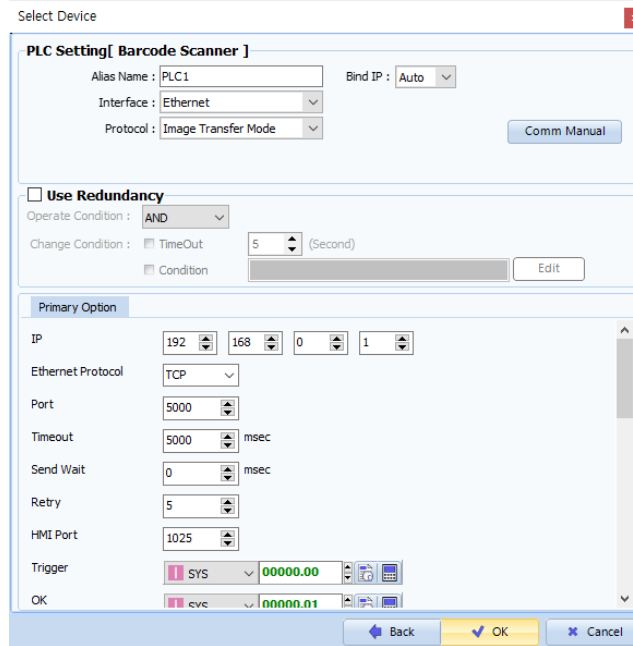
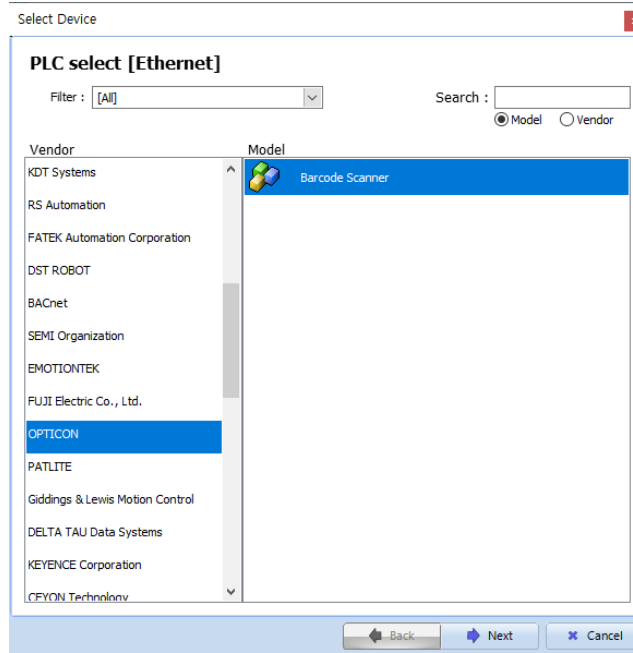


- 1:N connection



2. External device selection

- Select a TOP model and a port, and then select an external device.



| Settings | | Contents | | | | | |
|-----------------|-----------|--|-------|-----------|----------|-----------------|----------|
| TOP | Model | Select the TOP model. | | | | | |
| External device | Vendor | Select the vendor of the external device. Select "OPTICON". | | | | | |
| | Model | Select the external device to be connected to the TOP. <table border="1" style="width: 100%; border-collapse: collapse;"> <thead> <tr> <th>Model</th> <th>Interface</th> <th>Protocol</th> </tr> </thead> <tbody> <tr> <td>Barcode Scanner</td> <td>Ethernet</td> <td>Image Transfer Mode</td> </tr> </tbody> </table> <p>Please check the system configuration in Chapter 1 to see if the external device you want to connect is a model whose system can be configured.</p> | Model | Interface | Protocol | Barcode Scanner | Ethernet |
| Model | Interface | Protocol | | | | | |
| Barcode Scanner | Ethernet | Image Transfer Mode | | | | | |

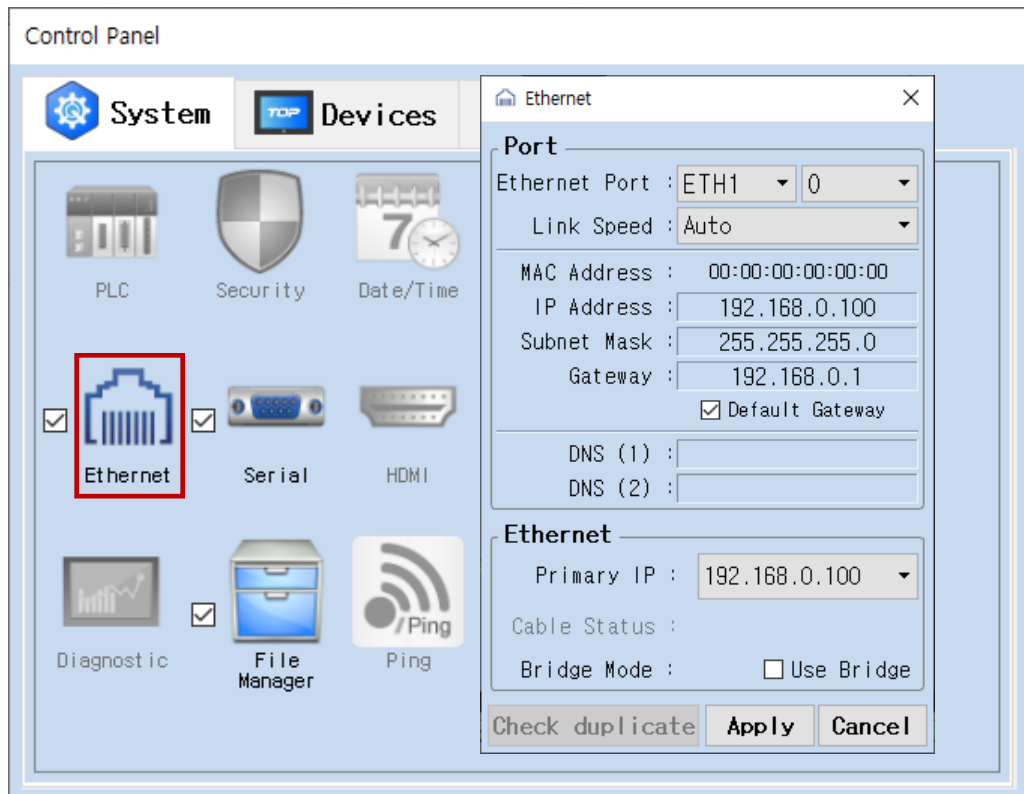
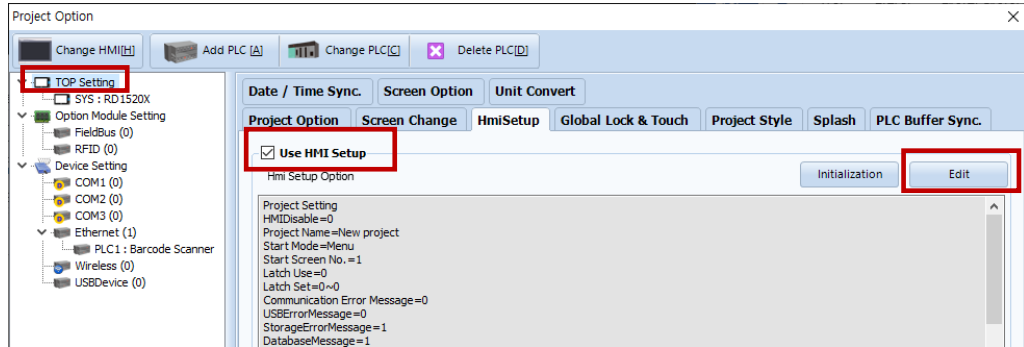
3. TOP communication setting

The communication can be set in TOP Design Studio or TOP main menu. The communication should be set in the same way as that of the external device.

3.1 Communication setting in TOP Design Studio

(1) Communication interface setting

- [Project] → [Property] → [TOP Setting] → [HMI Setup] → [Use HMI Setup Check] → [Edit] → [System] → [Ethernet]
- Set the TOP communication interface in TOP Design Studio.



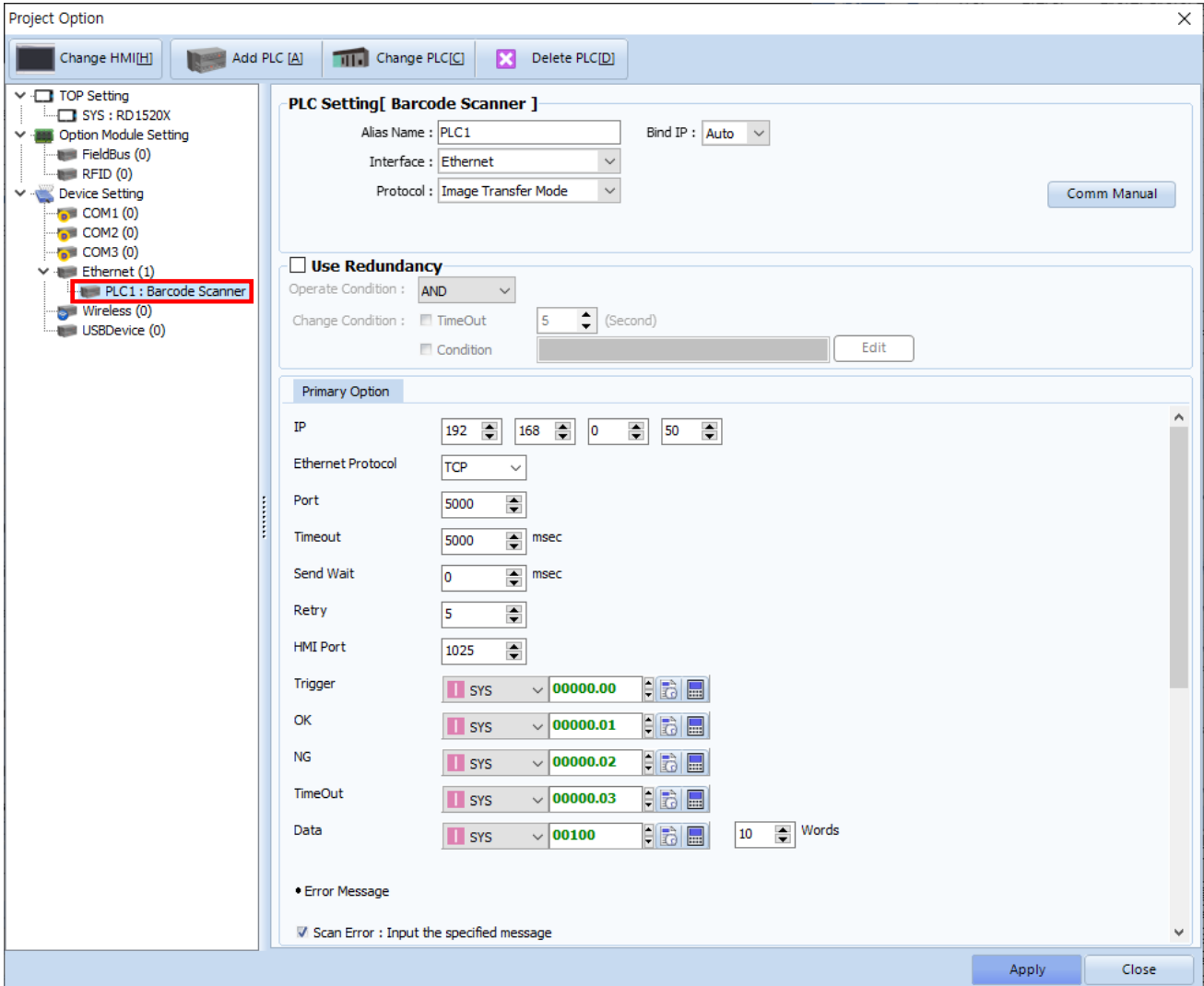
| Items | TOP | External device | Remarks |
|-------------|---------------|-----------------|---------|
| IP Address | 192.168.0.100 | 192.168.0.50 | |
| Subnet Mask | 255.255.255.0 | 255.255.255.0 | |
| Gateway | 192.168.0.1 | 192.168.0.1 | |

* The above settings are examples recommended by the company.

| Items | Description |
|-------------|---------------------------------------|
| IP Address | Set the IP address of the TOP. |
| Subnet Mask | Enter the subnet mask of the network. |
| Gateway | Enter the gateway of the network. |

(2) Communication option setting

- [Project] → [Project Property] → [Device Setting > Ethernet > Barcode Scanner]
- Set the options of the Barcode Scanner communication driver in TOP Design Studio.



* The above settings are examples recommended by the company.

| Items | Settings | Remarks |
|-------------------|---|--|
| Interface | Select "Ethernet". | Refer to "2. External device selection". |
| Protocol | Select the communication protocol between the TOP and an external device. | |
| IP | Enter the IP address of the external device. | |
| Ethernet Protocol | Select the Ethernet protocol between the TOP and an external device. | |
| Port | Enter the Ethernet communication port number of an external device. | |
| TimeOut (ms) | Set the time for the TOP to wait for a response from an external device. | *Note 1) |
| SendWait (ms) | Set the waiting time between TOP's receiving a response from an external device and sending the next command request. | |
| Retry | Configures the number of attempts for data reception upon failure. | |
| HMI Port | Enter the Ethernet communication port number of the TOP. | |
| Trigger | Configures the Bit address for executing barcode scan. | |
| OK | Configures the enabled Bit address upon successful barcode scan. | |
| NG | Configures the enabled Bit address upon failed barcode scan. | |
| TimeOut | Set the bit address which becomes ON when timeout occurs. | |
| Data | Configures the address and word length for entering barcode data. | |

*Note 1) Set it longer than the receiving queue time of the barcode scanner.

● Error Message

| Enter designated message upon failed barcode scan. | | |
|--|---|------|
| Scan Error : Input the specified Message | Configure to enable or disable. | |
| Message | Message | |
| Destination | Enter to data storage address. | |
| Enter reference message upon failed barcode scan. | | |
| Scan Error : Input a message from address | Configure to enable or disable. | |
| Message | Message reference address | |
| Destination | Message input address | |
| Size | Configures the buffer size of the message reference/input address | Word |
| Enter designated message upon timeout. | | |
| Time Out : Input the specified Message | Configure to enable or disable. | |
| Message | Message | |
| Destination | Enter to data storage address. | |
| Enter reference message upon timeout. | | |
| Time Out : Input a message from address | Configure to enable or disable. | |
| Message | Message reference address | |
| Destination | Message input address | |
| Size | Configures the buffer size of the message reference/input address | Word |

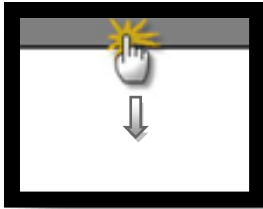
※ Error log feature

The following communication driver is equipped with a feature to record incoming/outgoing messages and operation details onto the SD card if it fails to receive data from its counterpart device due to time outs or scan failure. The recorded text files are stored chronologically in the %media%sdcard1%HMI\Driver_Log folder of the SD card. Operation in TOP-VIEW mode, saves the files to C:\Program Files (x86)\M2I Corp\TOP Design Studio\SCADA\UserData\Driver_Log.

3.2. Communication setting in TOP

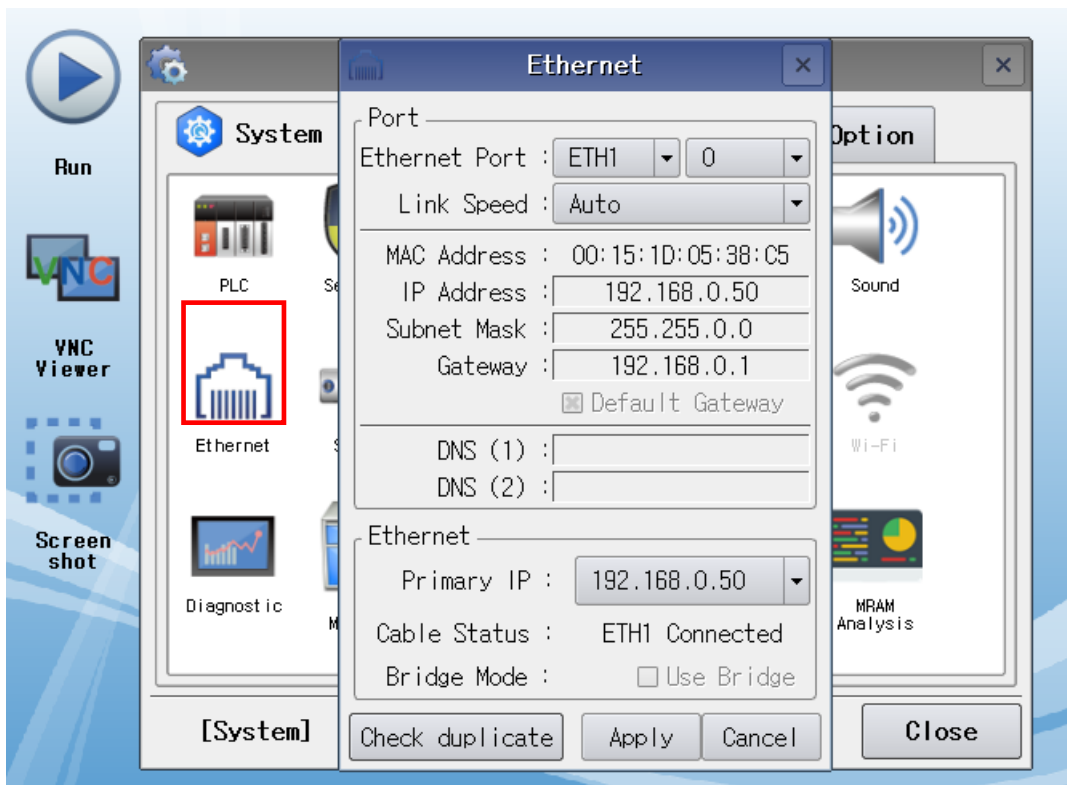
* This is a setting method when "Use HMI Setup" in the setting items in "3.1 TOP Design Studio" is not checked.

- Touch the top of the TOP screen and drag it down. Touch "EXIT" in the pop-up window to go to the main screen.



(1) Communication interface setting

- [Control Panel] → [System] → [Ethernet]



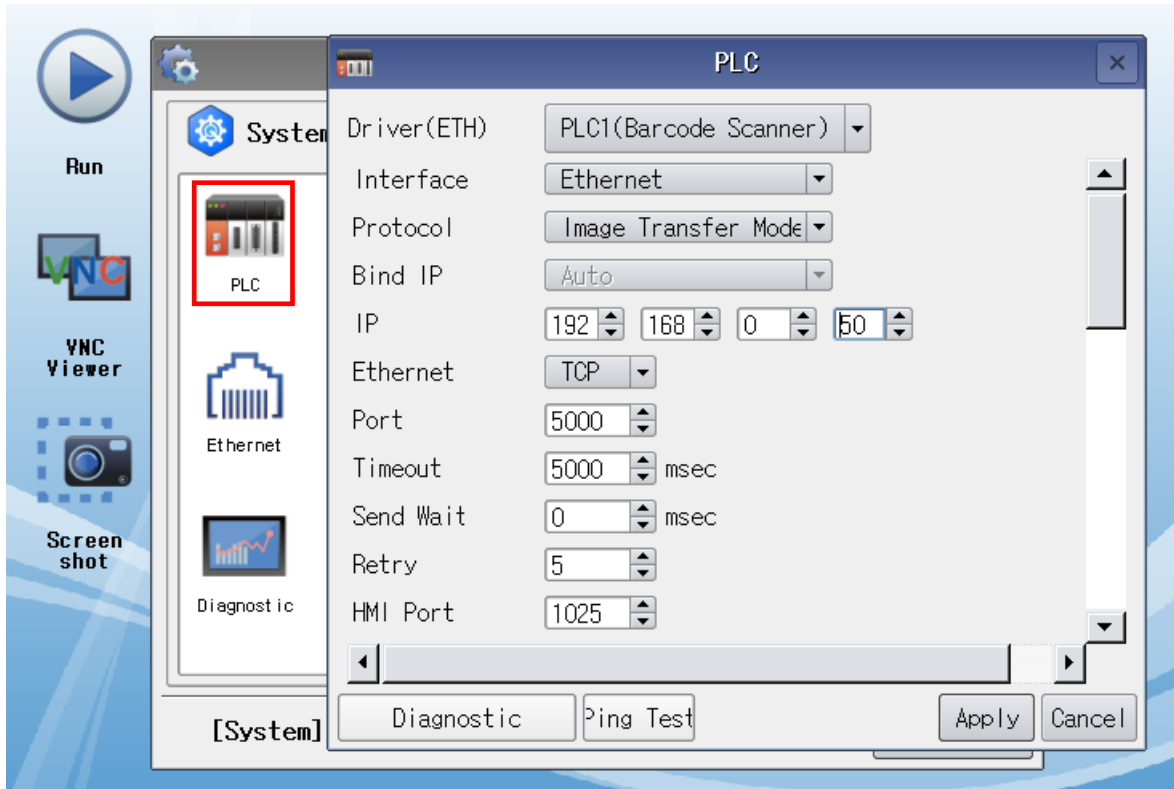
| Items | TOP | External device | Remarks |
|-------------|---------------|-----------------|---------|
| IP Address | 192.168.0.100 | 192.168.0.50 | |
| Subnet Mask | 255.255.255.0 | 255.255.255.0 | |
| Gateway | 192.168.0.1 | 192.168.0.1 | |

* The above settings are examples recommended by the company.

| Items | Description |
|-------------|---------------------------------------|
| IP Address | Set the IP address of the TOP. |
| Subnet Mask | Enter the subnet mask of the network. |
| Gateway | Enter the gateway of the network. |

(2) Communication option setting

■ [Control Panel] → [System] → [PLC]



* The above settings are examples recommended by the company.

| Items | Settings | Remarks |
|-------------------|---|---|
| Interface | Select "Ethernet". | Refer to "2. External device selection" . |
| Protocol | Select the communication protocol between the TOP and an external device. | |
| IP | Enter the IP address of the external device. | |
| Ethernet Protocol | Select the Ethernet protocol between the TOP and an external device. | |
| Port | Enter the Ethernet communication port number of an external device. | |
| TimeOut (ms) | Set the time for the TOP to wait for a response from an external device. | *Note 1) |
| SendWait (ms) | Set the waiting time between TOP's receiving a response from an external device and sending the next command request. | |
| Retry | Configures the number of attempts for data reception upon failure. | |
| HMI Port | Enter the Ethernet communication port number of the TOP. | |
| Trigger | Configures the Bit address for executing barcode scan. | |
| OK | Configures the enabled Bit address upon successful barcode scan. | |
| NG | Configures the enabled Bit address upon failed barcode scan. | |
| TimeOut | Set the bit address which becomes ON when timeout occurs. | |
| Data | Configures the address and word length for entering barcode data. | |

***Note 1)** Set it longer than the receiving queue time of the barcode scanner.

● Error Message

| Enter designated message upon failed barcode scan. | | |
|--|---|------|
| Scan Error : Input the specified Message | Configure to enable or disable. | |
| Message | Message | |
| Destination | Enter to data storage address. | |
| Enter reference message upon failed barcode scan. | | |
| Scan Error : Input a message from address | Configure to enable or disable. | |
| Message | Message reference address | |
| Destination | Message input address | |
| Size | Configures the buffer size of the message reference/input address | Word |
| Enter designated message upon timeout. | | |
| Time Out : Input the specified Message | Configure to enable or disable. | |
| Message | Message | |
| Destination | Enter to data storage address. | |
| Enter reference message upon timeout. | | |
| Time Out : Input a message from address | Configure to enable or disable. | |
| Message | Message reference address | |
| Destination | Message input address | |
| Size | Configures the buffer size of the message reference/input address | Word |

※ Error log feature

The following communication driver is equipped with a feature to record incoming/outgoing messages and operation details onto the SD card if it fails to receive data from its counterpart device due to time outs or scan failure. The recorded text files are stored chronologically in the %media%sdcard1%WHMI%Driver_Log% folder of the SD card. Operation in TOP-VIEW mode, saves the files to C:%Program Files (x86)%M2I Corp%TOP Design Studio%SCADA%UserData%Driver_Log%.

3.3 Communication diagnostics

- Check the interface setting status between the TOP and an external device.
 - Touch the top of the TOP screen and drag it down. Touch "EXIT" in the pop-up window to go to the main screen.
 - Check that the settings of the connected ports in [Control Panel] → [System] → [Ethernet] are the same as the settings of the external device.

- Diagnosis of whether the port communication is normal or not
 - Touch "Communication Diagnostics" in [Control Panel] → [System] → [PLC].
 - Check whether communication is connected or not.

| | |
|--|--|
| Communication diagnostics succeeded | Communication setting normal |
| Error message | Communication setting abnormal - Check the cable, TOP, and external device settings. (Refer to Communication diagnostics sheet.) |

- Communication diagnostics sheet
 - If there is a problem with the communication connection with an external terminal, please check the settings in the sheet below.

| Items | Contents | Check | | Remarks | |
|----------------------|---------------------------------------|---------------------------|----|--|----|
| System configuration | How to connect the system | OK | NG | 1. System configuration | |
| | Connection cable name | OK | NG | | |
| TOP | Version information | OK | NG | 2. External device selection 3. Communication setting | |
| | Port in use | OK | NG | | |
| | Driver name | OK | NG | | |
| | Other detailed settings | OK | NG | | |
| | Relative prefix | Project setting | OK | | NG |
| | | Communication diagnostics | OK | | NG |
| | Ethernet port setting | IP Address | OK | | NG |
| | | Subnet Mask | OK | | NG |
| Gateway | | OK | NG | | |
| External device | CPU name | OK | NG | 4. External device setting | |
| | Communication port name (module name) | OK | NG | | |
| | Protocol (mode) | OK | NG | | |
| | Setup Prefix | OK | NG | | |
| | Other detailed settings | OK | NG | | |
| | Ethernet port setting | IP Address | OK | | NG |
| | | Subnet Mask | OK | | NG |
| Gateway | | OK | NG | | |

4. External device setting

Configure the IP and port number of the external device by referring to the vendor's user manual.