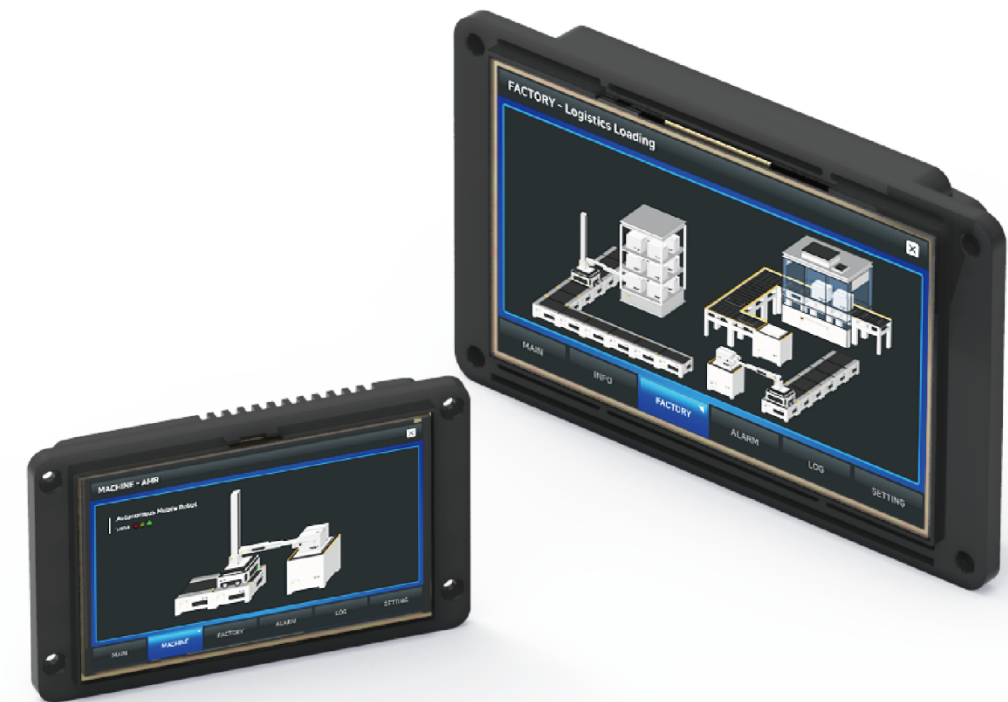


Caution | Please read the manual before use.  
Real color of product and catalog image color can be different.  
Contents in this catalog can be changed without any notice.

**M2I** Corporation  
Man · Machine · Interface

**TOP RN SERIES**



**TOP RN SERIES**

Product Catalog

**M2I Corporation**

HEAD OFFICE ADDRESS: 11-35, Simin-daero 327beon-gil, Dongan-gu, Anyang-si, Gyeonggi-do 14055, Republic of Korea  
TEL: 82-31-465-3366  
FAX: 82-31-465-3355

V 1.0E 250527

[www.m2i.co.kr/eng](http://www.m2i.co.kr/eng)

*TOPRN SERIES*

CONTENTS

TOPRN SERIES  
OPEN FRAME HMI

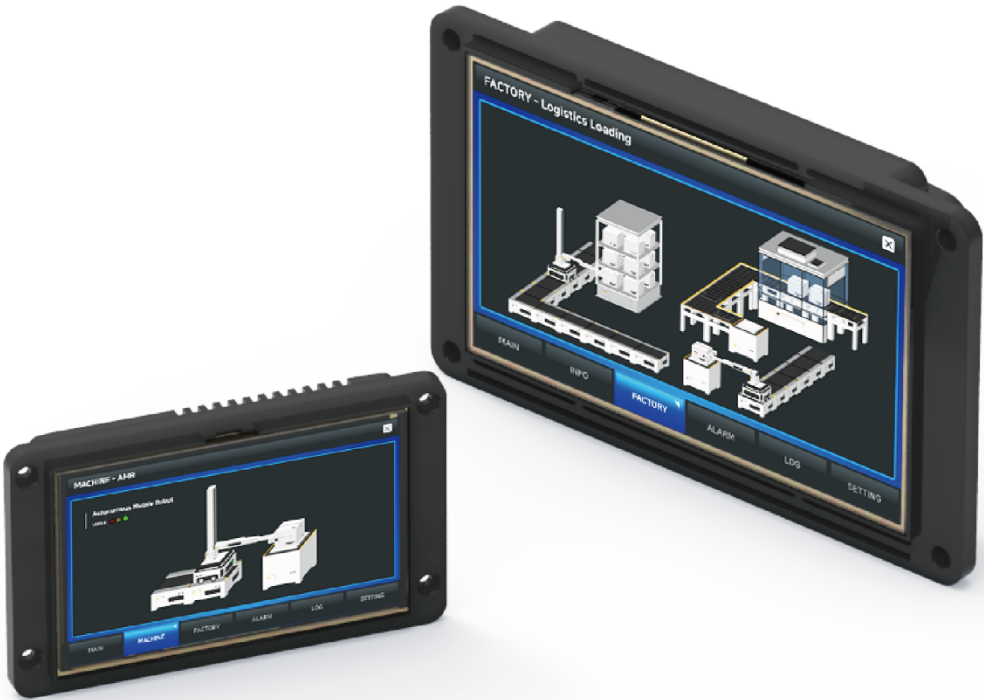
04P

# TOPRN SERIES

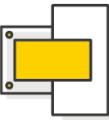
OPEN FRAME HMI

INTERFACE

- SERIAL 3(2) CHANNEL
- ETHERNET 2(1) CHANNEL
- USB HOST
- USB DEVICE



## FEATURES



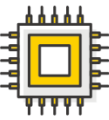
### Flexible Open-Frame Design for Custom Exterior Integration

Supports clean flush-mount installation with no exposed frame  
Offers choice of standard or flat mounting methods  
Pre-drilled mounting holes enable fast and easy installation  
Compatible with both landscape and portrait orientations



### Flat Operation Surface for Convenient Use

Prevents buildup of dust and foreign substances for easy maintenance  
Front sheet attachment ensures water and dust resistance  
Enables stable operation even in wet environments



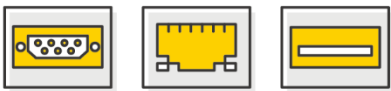
### High-Performance Hardware Specifications

Equipped with a high-speed Quad-Core CPU  
Supports 16M full-color display and vector image library  
Intuitive UI with touch-drag and memo functions



### Compact and Flexible Sizing

Slim design ideal for space-constrained environments  
Customizable sizing tailored to industry-specific equipment requirements



### Optimized Interface Configuration

Ample connectivity and expandability for complex industrial environments  
4 inch Model: 3 Serial, 1 Ethernet, 1 USB Host, 1 USB Device  
7 inch Model: 3 Serial, 2 Ethernet, 1 USB Host, 1 USB Device



### Extensive Support for Industrial Communication Protocols

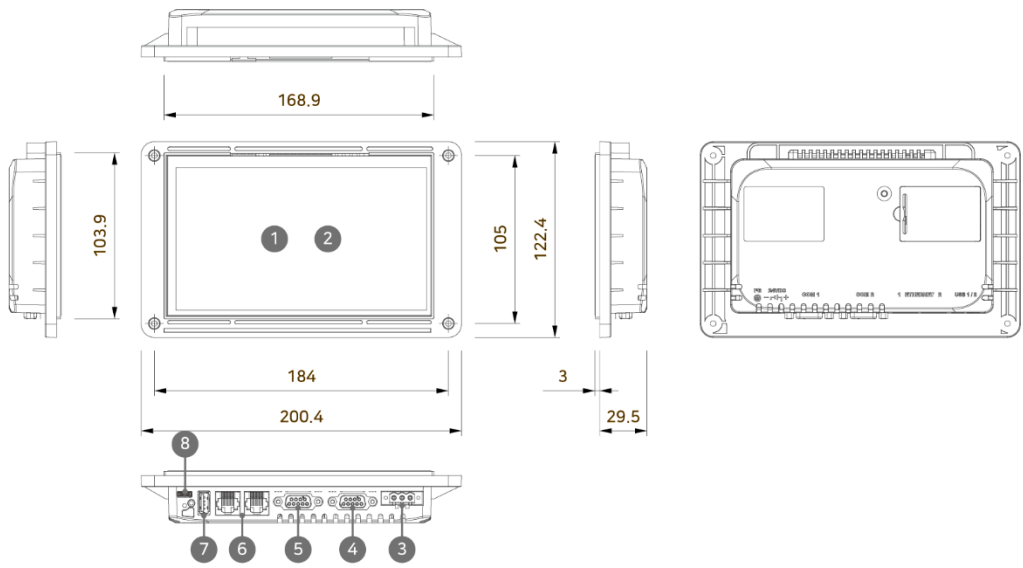
Broad compatibility with over 300 types of controllers  
Supports major industrial networks including Modbus and EtherNet/IP

TOPRN SPECIFICATIONS

Functional		TOPRN0700WD	TOPRN0400WD
Display	Display Type	7" TFT Color	4.3" TFT Color
	Color	16M Colors	
	Display Area(mm)	154.08 x 85.92	95.04 x 53.86
	Resolution(dot)	800 x 480	480 x 272
	Brightness Level	10 Levels(by software)	
	Backlight Type	LED	
	Backlight Life	50,000 hours	
Touch	Touch Type	Analog resistive film	
	Resolution(Cell)	800 x 480	480 x 272
	Touch Life	1 million times or more	
Interface	Serial COM1	RS-232C Asynchronous Data bit: 7/8 bits, Stop bit: 1/2 bits, Parity bit: None/Odd/Even Baud rate: 2400~115.2kbps Connector: DSUB 9pin x 1	RS-232C Asynchronous Data bit: 7/8 bits, Stop bit: 1/2 bits, Parity bit: None/Odd/Even Baud rate: 2400~115.2kbps Connector: 12pin Connector
	Serial COM2	RS-232C, RS-422/485 Asynchronous Data bit: 7/8 bits, Stop bit: 1/2 bits, Parity bit: None/Odd/Even Baud rate: 2400~115.2kbps Connector: DSUB 9pin x 1	RS-232C, RS-422/485 Asynchronous Data bit: 7/8 bits, Stop bit: 1/2 bits, Parity bit: None/Odd/Even Baud rate: 2400~115.2kbps Connector: 12pin Connector
	Serial COM3	RS-485 Asynchronous Data bit: 7/8 bits, Stop bit: 1/2 bits, Parity bit: None/Odd/Even Baud rate: 2400~115.2kbps Connector: DSUB 9pin x 1	RS-485 Asynchronous Data bit: 7/8 bits, Stop bit: 1/2 bits, Parity bit: None/Odd/Even Baud rate: 2400~115.2kbps Connector: 12pin Connector
	Ethernet	IEEE802.3i/IEEE802.3u, 10BASE-T/100BASE-TX Connector: RJ-45 x 2	IEEE802.3i/IEEE802.3u, 10BASE-T/100BASE-TX Connector: RJ-45 x 1
	USB Host	USB 2.0 Compatible, Output 5Vdc/0.5A Support: USB Storage, USB Barcode Scanner(Standard Keyboard Protocol) Connector: USB Type A x 1	
	USB Device	USB 2.0 Compatible, Max 5m Connector: USB-C x 1	
	Printer	Roll printer(EPSON protocol)	
	Screen memory	128MB	
	Backup memory	512KB: System buffer(10K Word), Including Alarm/Logging/Recipe	
	Backup Period	Permanent	
Memory & Others	Real Time Clock	Built in	
	Status LED	1 LED(Operation) Built in	
Power	Input Voltage	24Vdc(20 ~ 28Vdc)	
	Power Consumption	15W	
	Voltage Sag	24Vdc, Within 10ms	
	Insulation Resistance	500Vdc, 10MΩ	
Environment	Operation Temperature(℃)	-10 ~ +50	
	Storage Temperature(℃)	-20 ~ +60	
	Operation Humidity(%RH)	0 ~ 90(No dew)	
	Atmosphere	No corrosive gas	
	Vibration Endurance	Amplitude: 10≤F<25Hz(2G) X, Y, Z each direction(for 30 minutes)	
	Noise Immunity	1000Vp-p(Pulse width 1μs)	
	Electrostatic Discharge	Connective discharge from EN61000-4-2: ±4kV	
	Shock Endurance	10G X, Y, Z each direction(for 3 times)	
	Ground Connection	Class 3(100Ω or less)	
	Protection Classification	IP54(with protective front sheet attached)	
Structure	Certification	KC, CE	
	Panel Cut(mm)	155 x 87	97.5 x 56
	External Dimension(mm)	200.4 x 122.4 x 32.5	131 x 81 x 19.8
	Weight(kg)	0.5	0.3
	Cooling System	Natural air circulation	
	Case Material	Plastic	

TOPRN0700WD DRAWING

Dimensions and Components



- 1

LCD Panel
- 2

Touch Panel
- 3

Power Input
- 4

Serial COM1/3
- 5

Serial COM2
- 6

Ethernet 2ch
- 7

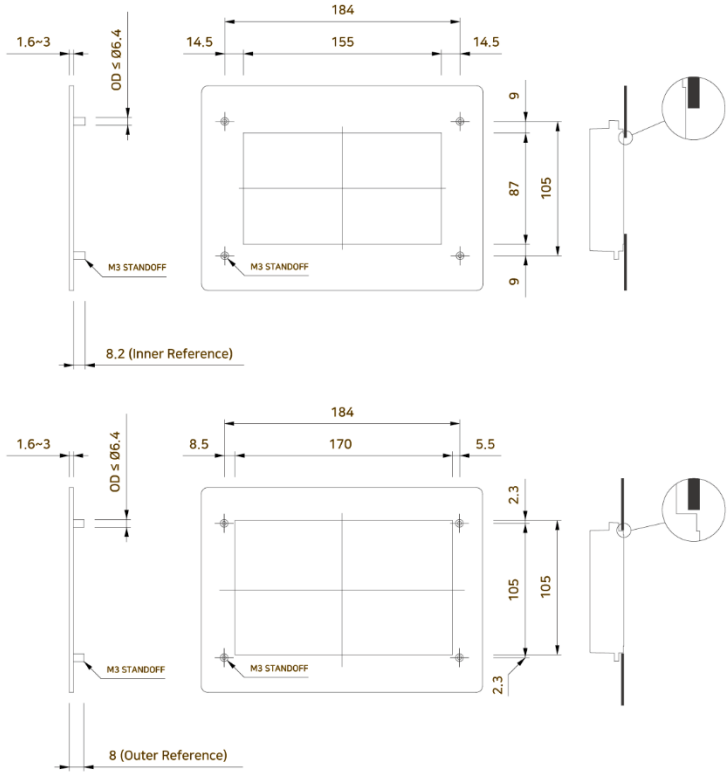
USB Host
- 8

USB Device

Panel Fabrication

[ Standard Mount ]

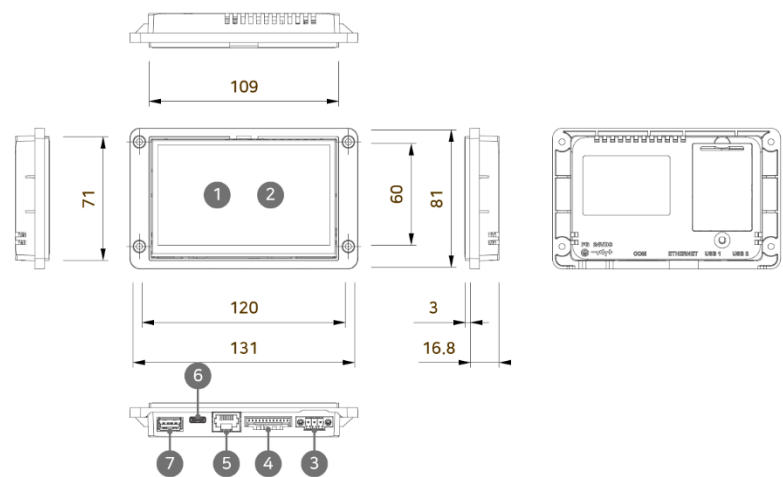
[ Flat Mount ]



\* For detailed information, refer to the hardware manual

TOPRN0400WD DRAWING

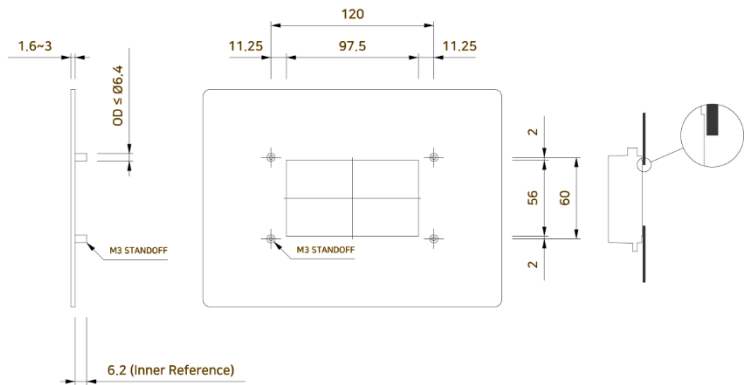
Dimensions and Components



- |   |             |   |                 |   |            |   |          |
|---|-------------|---|-----------------|---|------------|---|----------|
| 1 | LCD Panel   | 3 | Power Input     | 5 | Ethernet   | 7 | USB Host |
| 2 | Touch Panel | 4 | Serial COM1/2/3 | 6 | USB Device |   |          |

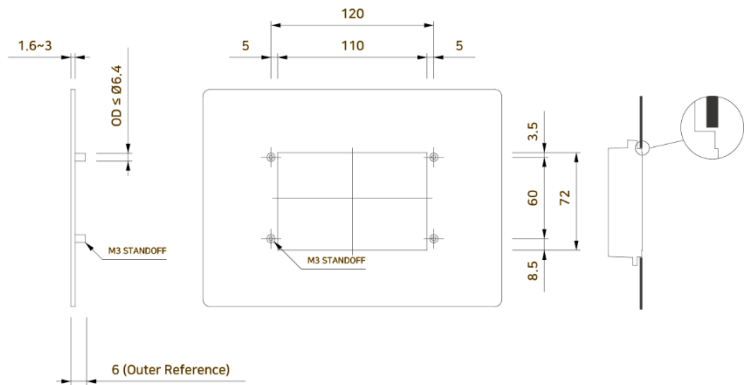
Panel Fabrication

[ Standard Mount ]



\* Dimensions of Rear Panel

[ Flat Mount ]



\* For detailed information, refer to the hardware manual

Promise to Customer

- PROMISE 1** Communicating(Interact) with Customer | Customer to be first, on their side
- PROMISE 2** Continuous Growth | Constant development, improvement of reliability and productivity
- PROMISE 3** Brand New Change | Change to become leader of field of smart factory automation

For customer's satisfaction, M2I will keep communicate, to improve quality of product, M2I will keep research and develop, no fear to change.

Smart Era, Smart Competitiveness, Your TOP