



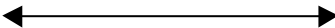
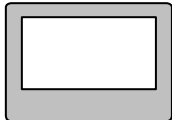
1.1 Comfile Technology Tiny PLC Series

1.1.1 Tiny PLC CPU Direct

The following section describes the system configuration and interface between Comfile Technology Tiny PLC and TOP using serial communication.

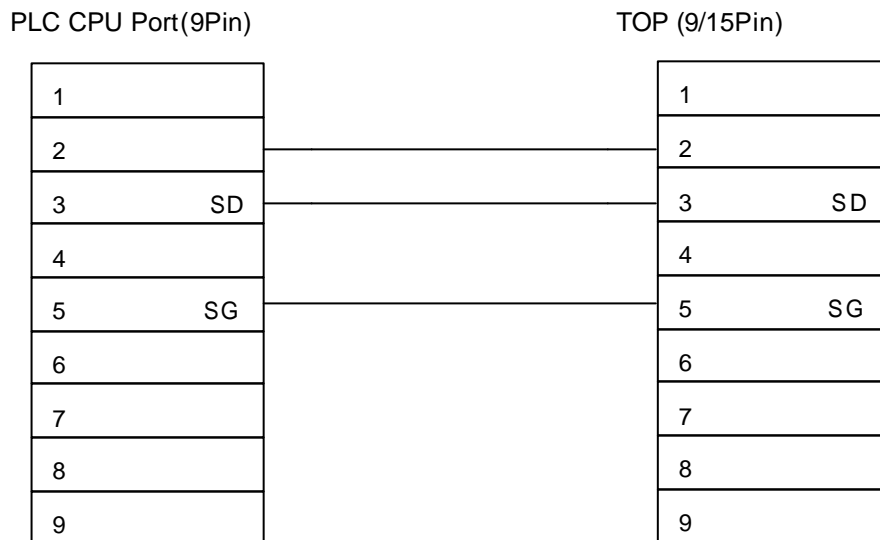
1.1.1.1 System Configuration

This figure shows system configuration to connect Tiny PLC to TOP.

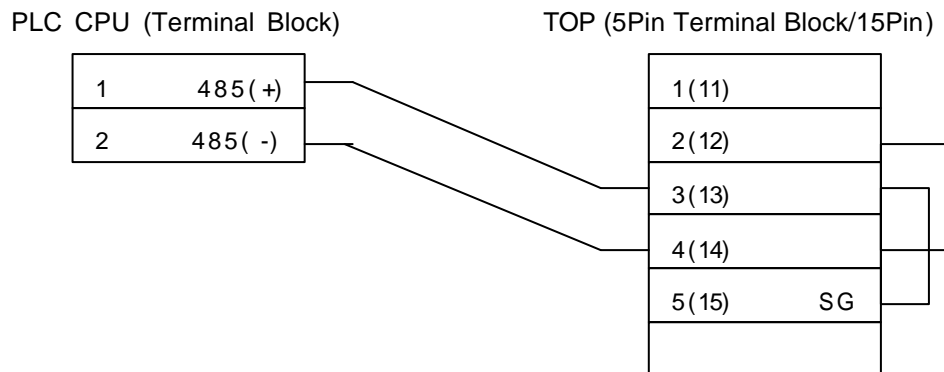
PLC	Comm. Unit	Cable	TOP
			
TCP32/37	None	Refer to Cable Connection. (RS-232C/485)	All TOP

1.1.1.2 < Cable Diagram >

(1) RS-232C (TCP32/37 TOP (for 9/15Pin Connector))



(2) RS-485 (TCP32/37 TOP (for 5Pin Terminal Block or 15Pin Connector))



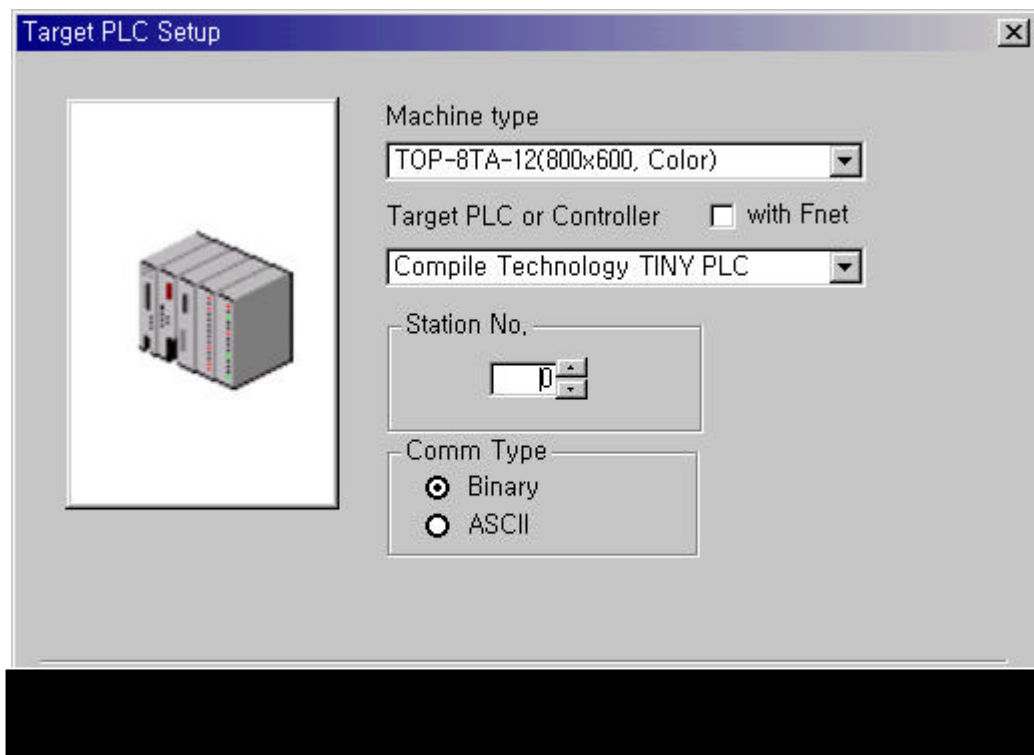
1.1.1.3 Tiny PLC Setup

Do not need set.

1.1.1.4 TOP Setup

(1) TOP Designer Setup

Select "Compile Technology TINY PLC" in PLC type.



(2) TOP Serial Setup

Serial Settings are as follows.

- Serial Baud Rate : 9600
- Serial Data Bit : 8(fixed)
- Serial Stop Bit : 1(fixed)
- Serial Parity Bit : None(fixed)
- Serial Signal Level : Same as controller's Station Address
- Controller's Station No. at Comm. Diagnosis(0~31) : Same as controller's Station Address

1.1.2 Available Address List

PLC Address to be available to READ/WRITE in TOP is as follows.

In case of TCP32/37

Device	Bit Address	Word Address
Input/Output Relay (P)	P0000 – P0157	P0000 - P014
AUX. Relay (M)	M0000 – M1277	M0000 – M126
KEEP Relay (K)	K0000 - K0317	K0000 - K030
Special Relay (F)	F0000 - F0157	F0000 - F014
Step Relay (S)	S0000 ~ S0317	S0000 - S030
Timer-CV (T)		T0000 - T0255
Counter-CV (C)		C0000 - C0255
Data Register (D)		D0000 – D1023
AD Area (AD)		A0000 - A0015
High Speed Counter Area (CNT)		N0000 – N0001
LCD Area (CH)		H0000 - H0079
7 Segment (G)		G0000 – G0039